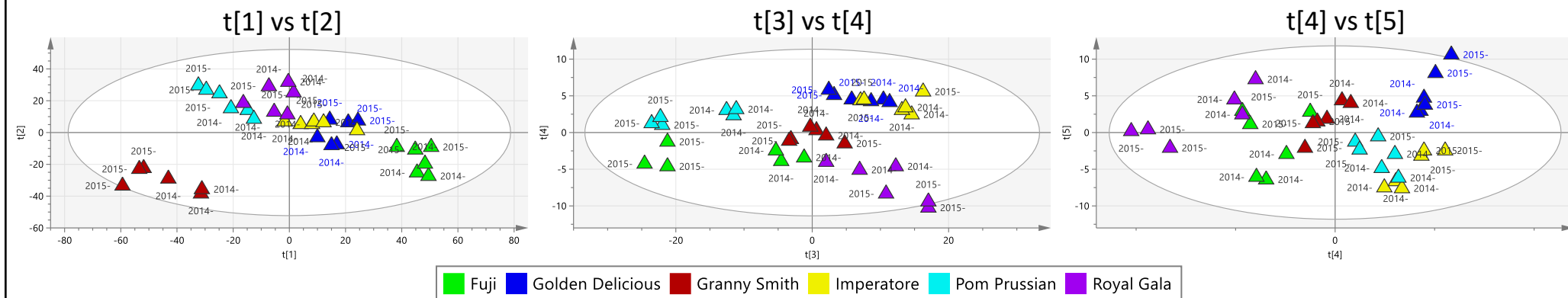
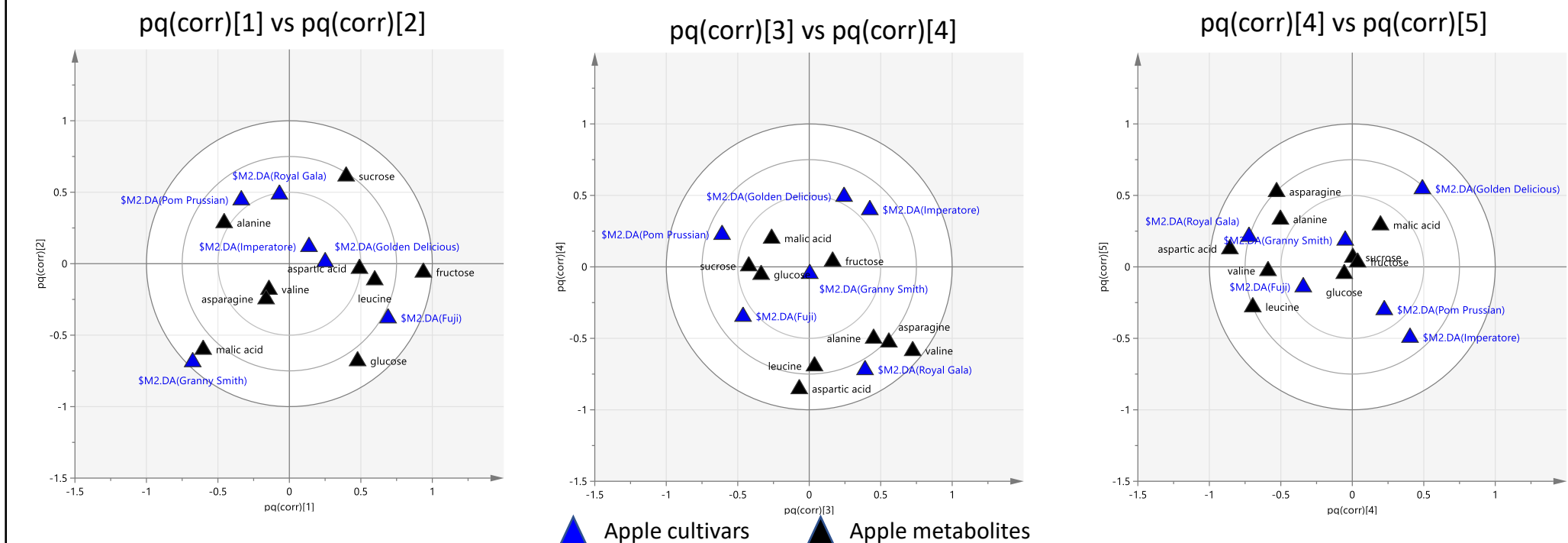


Figure S2. Supervised O2PLS-DA of NMR and HPLC-DAD data matrices for apples and pears

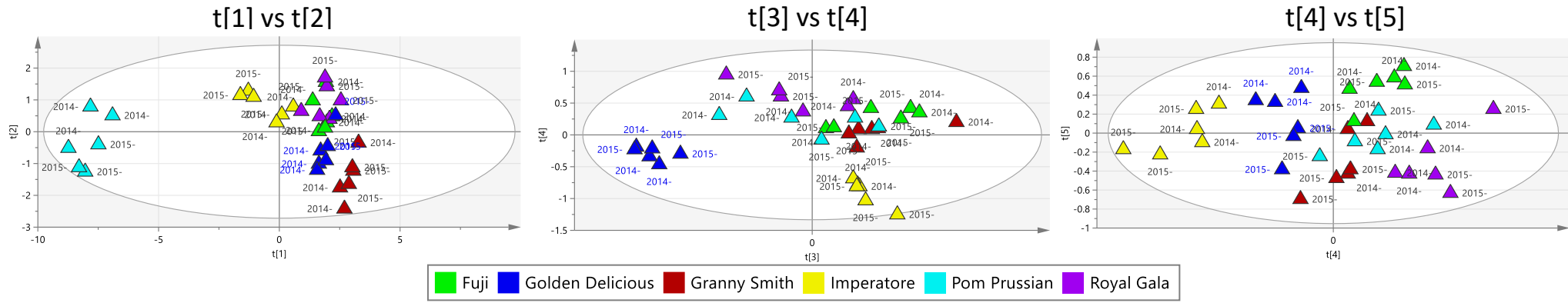
a) Apples, NMR dataset, O2PLS-DA score plots, 5+3 model



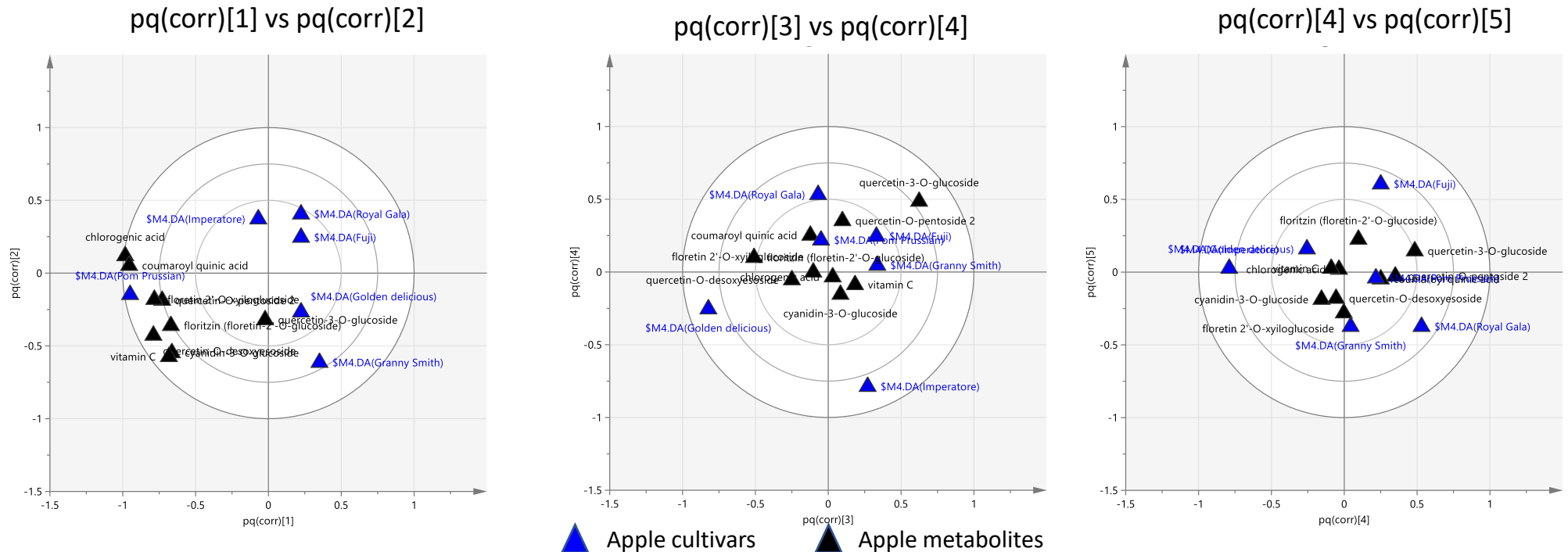
b) Apples, NMR dataset, O2PLS-DA loading plots, 5+3 model



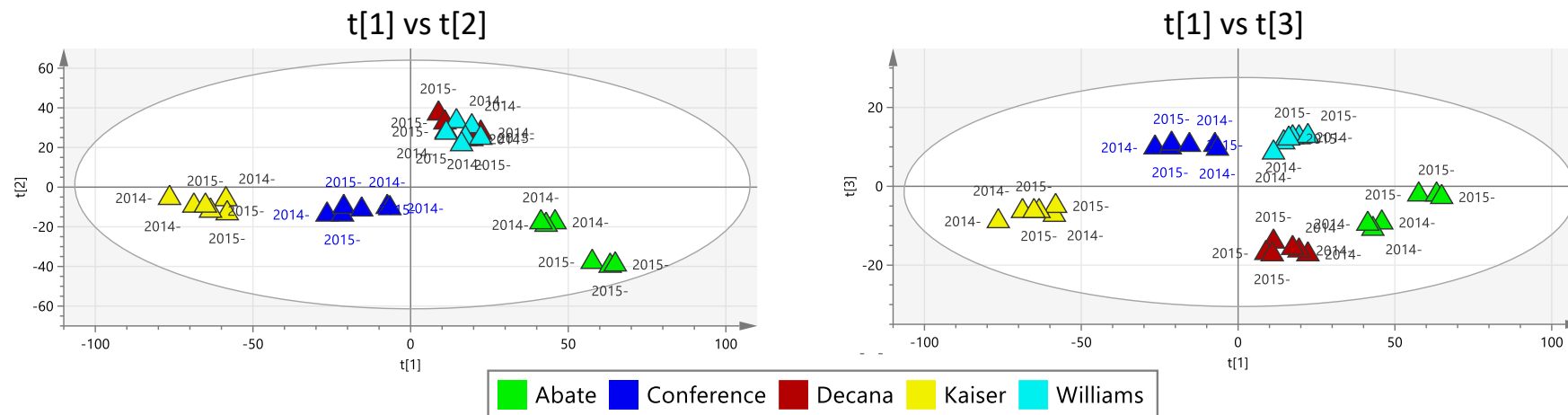
c) Apples, HPLC-DAD dataset, O2PLS-DA score plots, 5+2 model



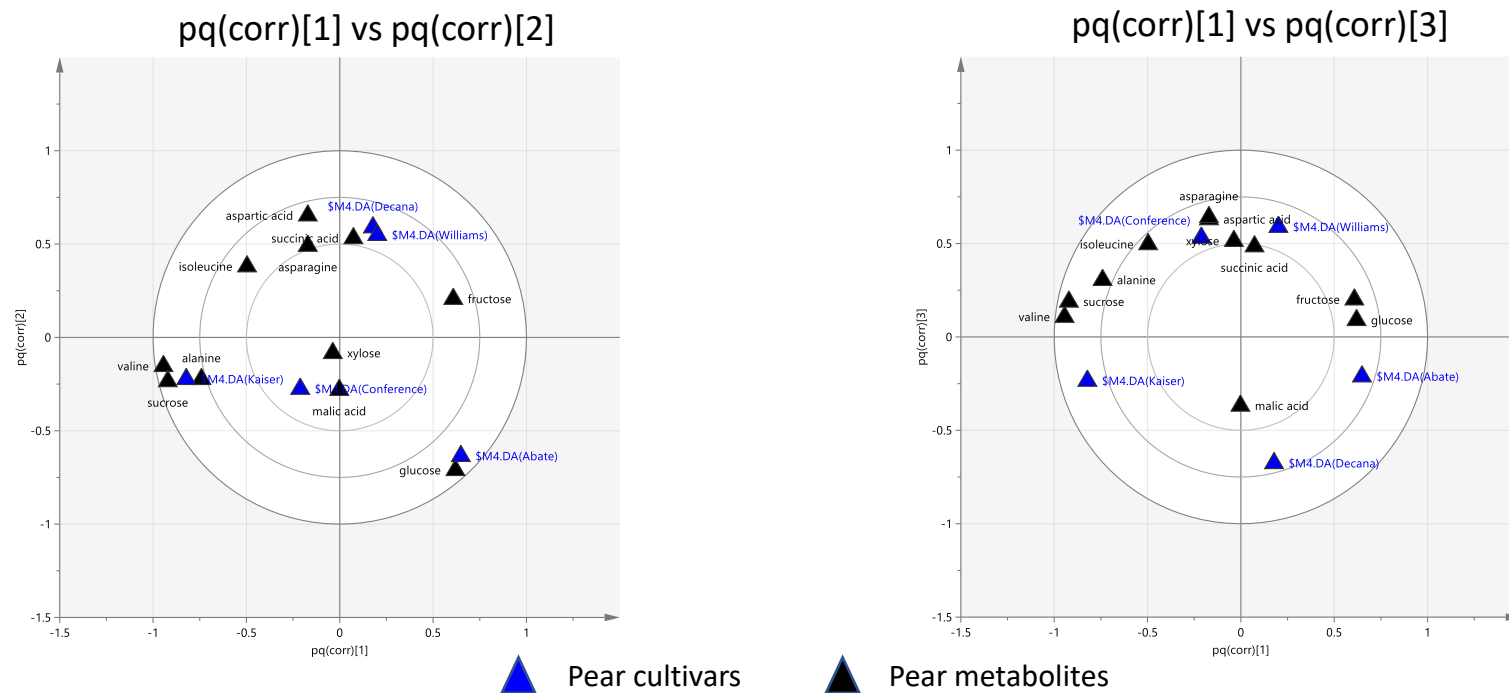
d) Apples, HPLC-DAD dataset, O2PLS-DA loading plots, 5+2 model



e) Pears, NMR dataset, O2PLS-DA score plot, 5+3 model

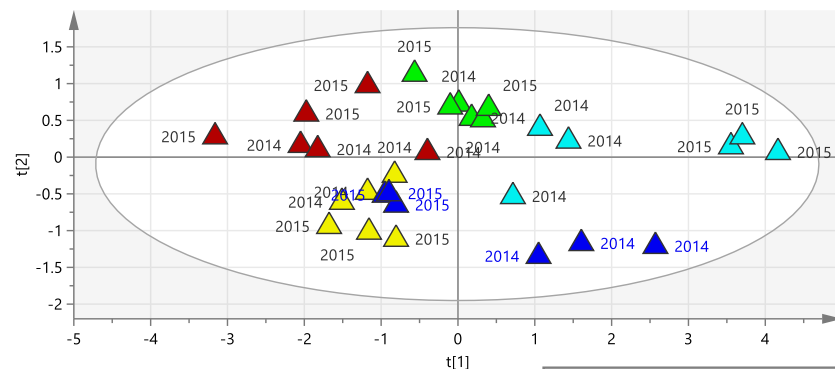


f) Pears, NMR dataset, O2PLS-DA loading plot, 5+3 model

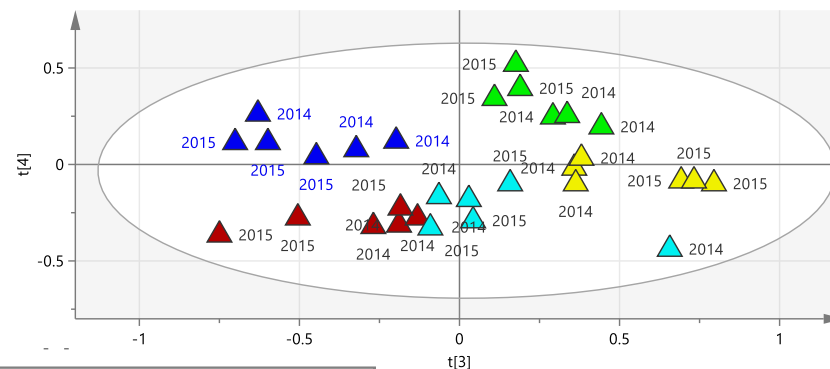


g) Pears, HPLC-DAD dataset, O2PLS-DA score plot, 5+2 model

t[1] vs t[2]

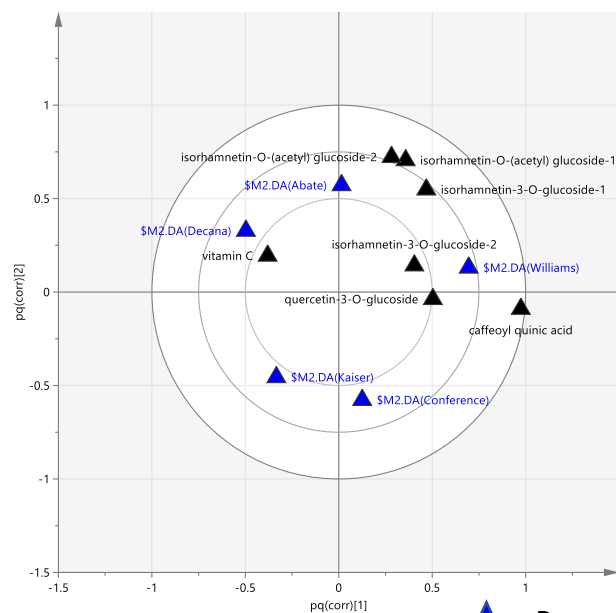


t[3] vs t[4]



h) Pears, HPLC-DAD dataset, O2PLS-DA loading plot, 5+2 model

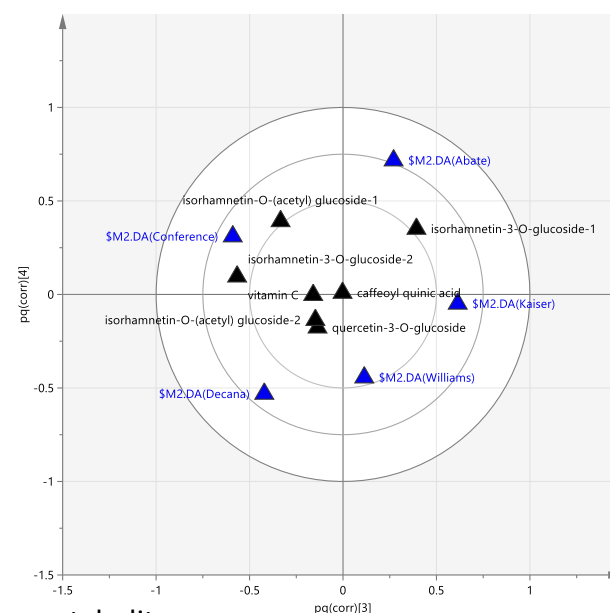
pq(corr)[1] vs pq(corr)[2]



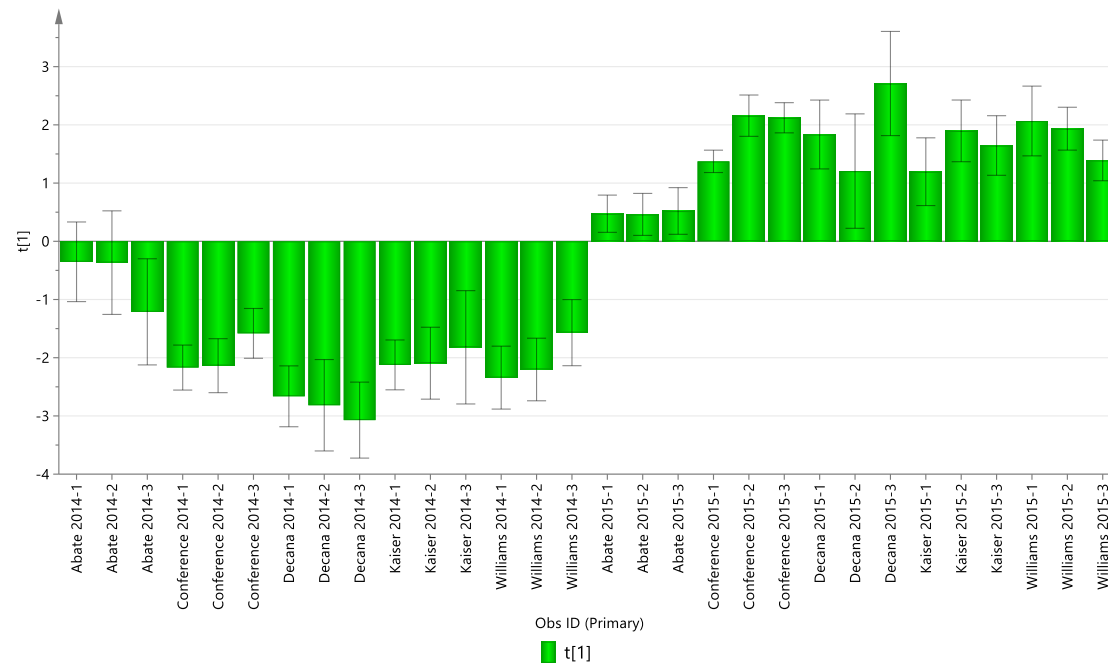
▲ Pear cultivars

▲ Pear metabolites

pq(corr)[3] vs pq(corr)[4]



i) Pears, HPLC-DAD and NMR datasets, O2PLS-DA score plot, 1+1model



j) Pears, HPLC-DAD and NMR datasets, O2PLS-DA loading plot, 1+1model

